



THE LIFE & WORK OF JOSEPH DAWLEY

Opening night Friday Jan 24, 2025, 5-9pm
Exhibition runs from Saturday Jan 25th 2025
through Sunday February 23rd 2025

L'ENFANT
GALLERY

ESTD. 1973

1442 Wisconsin Avenue NW Washington, D.C. 20007

L'ENFANT GALLERY



L'Enfant Gallery, on the corner of Wisconsin Ave and P Street NW, Georgetown, Washington DC, has been inhabiting the post-federal corner mansion since 2000. Peter Colasante has been in the art business in DC since 1973 sharing stories and art to Georgetowners, to the travelers and explorers who happened upon the doorstep, and to the diplomatic elite, the rich and the famous.

The four-story property has become an icon, known for its curious contents and colorful characters. The densely hung 'salon style' walls of gilded framed paintings are mixed with an eclectic cocktail of Presidential Americana, carved European furniture and slightly dusty Venetian chandeliers. It has always provided real escapism; a physical world of touched objects far away from the screen and online shopping experience.

An 1850s portrait hangs beside a modernist abstract still life. Americana eagles sit next to Russian icons and many presidents stand shoulder to shoulder with fine Asian porcelain and tribal sculptures. Every object has a story which Peter will recount to anyone who will listen, and sometimes to himself if no one is there to listen. "It's the only museum in the country where you can take something home with you and not get arrested!"

“Art responds to life, and this is truly a renaissance.”

Life Magazine article on Joseph Dawley, June 1993

Together with the Dawley family, we have brought together over 40 paintings and prints to honor Joseph Dawley’s career. From his art student days at SMU; to his success in Dallas as a master of realism depicting the ‘wild west’; to his later works as a great American impressionist as he adapted to his early onset Parkinson’s disease.

Peter Colasante has represented Joe Dawley since 1976 and continues to exhibit many of his paintings to this day.

ARTIST BIOGRAPHY

Joseph William Dawley (1936 - 2008) was a nationally exhibited American artist whose works hung in The White House and whose oil paintings range from traditional to abstract, transcending styles and generations.

JOE’S EARLY YEARS:

‘Joe’, as he was known, was born in Nashville, Arkansas in 1936 and was raised in Dallas, Texas. He knew from a young age that he wanted to be a painter. Joe was inspired by his mother who was a watercolorist, however his father asked him to “major in something else for two years” as “you can’t make a living doing that.”¹ Joe promised he would, and after completing two years of engineering courses at the University of Tennessee, he came back to his father and told him, “Okay, I’m ready to be an artist!”² He went on to receive his Bachelor of Fine Art from Southern Methodist University (SMU) and some of his early art still hangs there today. In 1960 he studied at the Dallas Museum of Fine Arts and in 1961 attended the Art Students League, NYC.

In 1961 he married Gloria (‘Gigi’) Gobble whose death in 2024 sparked the desire to show these paintings together again. The couple moved to New Jersey where Joe worked for the Newark Evening News retouching photos and sidelining as a political cartoonist, when he drew some of the “Alvin and the Chipmunks” comic books and created a daily comic strip called “The Chief”. This was published in over 100 newspapers across the US, however the double-life of cartoonist by day and serious painter by night was challenging.

BIOGRAPHY

MASTER OF REALISM:

In 1968 he decided it was time to devote all his time to painting. His love was the traditional renaissance style, particularly the works of Rembrandt. He mastered the detail and precision that the Old Masters had and won numerous awards³ over the next few years.

Joe held his first art show in 1969 and continued to paint full time until 1975 when he was commissioned by The Vatican to paint the official portrait for the canonization of Mother Elizabeth Seton. This portrait hung in St Patrick's Cathedral in New York City and the commission gained Dawley admittance to the "Who's Who in American Art 1978". In 1977 he opened an independent art gallery in his hometown of Cranford, NJ.

During this time, a subtle shake in his right hand, his painting hand, had become noticeable. At first, Joe thought it was nerves, as he was under a lot of pressure to finish the commission. But not long after, at breakfast one morning, he sloshed coffee over a table in his suburban New Jersey home, and his wife knew something was gravely wrong. Gigi called a neurologist.⁴ At the age of just 39, he was immediately diagnosed with a rare form of Parkinsons disease.⁵

The disorder afflicts nearly a million Americans, mostly over the age of 50.

Incurable and progressive, it attacks areas of the brain that control muscles. Its best-known characteristic, which changed Dawley's life, is an uncontrollable tremor of the hands.

He worked around the condition until 1979, saying "You simply have to know how to work with the shake."⁶ But eventually he conceded that to continue painting, brain surgery was necessary. The risks were very real but his fundamental need to continue painting left him with no other option. Joe says he would as soon have "died right on the operating table" as not be able to paint.⁷

BIOGRAPHY

THE IMPRESSIONIST PERIOD

The summer of 1982, Joe underwent brain surgery to eliminate the tremor, and hoping to give himself more years to continue painting. After a long recovery period, he realized he had lost the dexterity of his painting hand. The rare and precious fine motor skills, essential for painting the details of realism were gone and this led to a difficult period of depression.

Gigi took a critical role in encouraging Joe to try a different style. She bought blank canvas and encouraged her husband to work, even though he couldn't write his name legibly. Still, he could handle broad brushstrokes, and with practice the strokes became shorter and more controlled. He laid colors next to each other rather than blending them. His palette changed from sombre to vivid. The transformation in style was staggering.⁸ His early works were masterpieces of traditionalism, with deep and dark colors and captivating attentions to detail. His new pieces changed both his style and tonal pallet. From the deep darkness came light. The post-surgery impressionist period focused not on detail but color.⁹

Over the years his tremor returned as the disease progressed, but he was able to adjust as his impressionistic paintings became acclaimed. Joe was quoted in Life Magazine as saying "Oddly enough, Parkinson's has been a boon. I'm a much better painter. There hasn't really been a downside."



BIOGRAPHY

Peter Colasante of L'Enfant Gallery has represented Joe Dawley since 1976 and continues to do so today. This friendship led Joe to be deeply connected to D.C. and as a result several prominent figures on Capitol Hill became collectors of his work throughout the 1980s and 1990s, including Senator George McGovern, Secretary of State Madeline Albright, Senator Gaylord Nelson, Senator Bill and Ellen Proxmire and most importantly for the advancement of Joe's career, David Carley, the eminent Lieutenant Governor under Gaylord Nelson. The art critic Frank Getlein was a great champion of Dawley's work, as well as Erol Aksoi, who owned the Park Avenue Bank of New York.

Peter was with Joe when he had the idea for a painting of Georgetown, Washington DC. The painting was done from the vantage point of the Kennedy Center roof. Joe, who rarely travelled alone, was assisted onto the train in NJ and Peter picked him up from Union Station in June 1990. Together they went to the Kennedy Center where Joe was to receive the 'Very Special Arts'¹⁰ lifetime achievement award. That evening Peter and Joe conceived the painting which would be called "June Sunset Over the Potomac," painted in 1991. Joe created a limited edition print and Peter had the idea to present the first copy of the print to President-elect Bill Clinton, who was also a graduate of Georgetown University. Clinton was so enamoured of this gift that he requested the original work be loaned to the White House for his term. According to USA TODAY, who printed this painting on their front page, "With one phone call

¹ *Chronicles of Courage*, p46.

² *Chronicles of Courage*, p46.

³ 1969 William Collins Award, Hudson Valley Art Association; 1969 The Salmagundi Award, Allied Artists Show; 1969 The Figure or Portrait Anonymous Award, Academic Artist; 1970 Jane Peterson Portrait Award, Allied Artist Show; 1970 Profile in American Artist magazine March issue.

⁴ *Life Magazine*, June 1993, pp. 76 – 83, article titled "The Rebirth of an Artist: A dread disease changes a painter into an acclaimed impressionist" Photography by Bob Adelman.

⁵ *Chronicles of Courage*, p47.

⁶ *Life*, *Ibid*.

⁷ *Life*, *Ibid*.

⁸ *Life*, *Ibid*.

⁹ *Seeing and Painting the Colors of Nature*, p26.

¹⁰ VSA is an international organization on arts, education and disability, which was founded in 1974 by former U.S. Ambassador to Ireland Jean Kennedy Smith. In 2011, VSA became the Department of VS and Accessibility at the John F. Kennedy Center for the Performing Arts

¹¹ USA Today, Warren Getler – date removed from newspaper cutting.

¹² *Life Magazine*, June 1993, pp. 76 – 83, article titled "The Rebirth of an Artist: A dread disease changes a painter into an acclaimed impressionist" Photography by Bob Adelman.

BIOGRAPHY

the White House sent a Secret Service van to fetch the 4 foot by 2 foot canvas from a local gallery¹¹. The painting then hung in Clinton's private dining room in the White House for both terms. This work was later purchased by an American businessman.

The story of Dawley, filmed in Peter Colasante's then Palm Beach Gallery was aired on April 18, 1989, on the Tom Brokaw Nightly News Program, and was featured in the Sunday New York Times on August 2, 1992, and then again on EyeWitness News on August 10, that same year. In June 1993 Life Magazine¹² published an article on Joe's life.



THE LAST SERIES

In his last paintings, Joe began to add himself into the works, sometimes leaving the figure unfinished and translucent, showing the transitions and fading of his presence. Looking across the canvas the figures become obscured, with some floating into an empty space. His family speaks of his acceptance of his mortality, but absolute resolve to continue painting.

By 2001 the disease had taken much of his body and mind, and he moved to live out the remainder of his life at a home in Easton, PA that specializes in Parkinson's dementia. Even there, when he no longer recognized many of his family, and had numerous hallucinations, his desire to paint was so strong that they set up a studio area for Joe and assisted him in continuing to paint for several more years.

When Joe died on September 15, 2008, he left behind his wife, two grown married daughters Cynthia and Catherine, and two grandchildren.

BIBLIOGRAPHY

PUBLICATIONS:

- Character Studies in Oil, by Joseph Dawley, Watson-Guption Publications, 1972
- Painter's Problem Book by Joseph Dawley as told by Gloria Dawley, Watson-Guption Publications, 1973
- Painting Western Character Studies, by Joseph Dawley, Watson-Guption Publications, 1975
- The Second Painter's Problem Book by Joseph Dawley as told by Gloria Dawley, Watson-Guption Publications, 1978
- Seeing and Painting the Colors of Nature, An Impressionist's View by Joseph and Gloria Dawley, Watson-Guption Publications, 1987
- Chronicles of Courage, Very Special Artists by Jean Kennedy Smooth and George Plimpton, Random House, 1993, See Chapter 4 "Joseph and Gloria Dawley, pp45-53)



CATALOGUE



1. Artist and Model,
SS 33" x 42" FS 40" x 50", Oil on board

CATALOGUE



2. Cowboy Cavalier
SS 30.5" x 35", FS 36" x 32", Oil on canvas

CATALOGUE



3. American King
SS 33" x 28", FS 41" x 37", Oil on canvas

CATALOGUE



4. Indian Girl
(Anadarko Maiden)
SS 14.75" x 14.25",
FS 21.75" x 21.25"
Oil on board,
signed lower right



5. Portrait of Wichita
Chief
SS 18" x 18.5",
FS 26.25" x 26.5"
Oil on board,
signed lower right

CATALOGUE



6. Lady in Black
SS 31" x 23.5", FS 36" x 29", Oil on board, signed upper left

CATALOGUE



7. Portrait of Job
SS 37" x 32.5", FS 53" x 50", Oil on canvas

CATALOGUE



8. Cartier in Winter
SS 23" x 35", FS 32" x 44"
Oil on canvas



9. Geometric sail boat
SS 7" x 10.5", 10.5" x 14"
Watercolor on paper



10. The Art Collector
SS 23" x 29", FS 34" x 40" Oil on canvas

CATALOGUE



11. Carnegie - Mellon in the Rain
SS 13" x 9.5", FS 21" x 17.25
Oil on board



12. Card Shark
SS 19" x 30", FS 20.5" x 31.5
Oil on board



13. Rue De Pontenelle, Paris
SS 49" x 69", FS 58" x 77", Oil on canvas

CATALOGUE



14. View of the Capital from New Jersey Ave
SS 16.5" x 26", FS 24" x 34", Oil on board



15. Road to the Lake
SS 29" x 30", FS 35.5" x 37", Oil on canvas

CATALOGUE



16. Wichita Prince
SS 49" x 39.5", FS 56" x 46"
Oil on board

CATALOGUE



17. Luncheon at Patricia Murphy's
SS 39" x 47", FS 46" x 53.5", Oil on canvas



19. Florida Fishing Docks
SS 29" x 39", FS 38" x 48", Oil on canvas

CATALOGUE



20. Walt Whitman
SS 39" x 29.5",
FS 48" x 38"
Oil on canvas



21. Preparing for the Ballet
SS 39.5" x 56", FS 46" x 62, Oil on canvas

CATALOGUE



22. Arlington Memorial Bridge Steps
SS 19" x 30", FS 27" x 37", Oil on canvas



23. On the Trail
SS 12" x 19", FS 21" x 28", Oil on canvas, signed lower right

CATALOGUE



24. The Card Player
5.5" 7.5", FS 10" x 12", Oil on board



25. Champaign Ladies
18" x 18", Oil on canvas

CATALOGUE



26. Doing Lunch
SS 22" x 17", FS 23" x 28", Oil on canvas



27. The Reception
SS 27.5" x 29.5", FS 35" x 37", Oil on canvas

CATALOGUE



28. The Artist's Secret Garden
48" x 72", Oil on canvas



29. The White House
SS 23" x 35.5", FS 34" x 46", Oil on canvas

CATALOGUE



30. China Town
SS 7.5" x 9.5",
FS 15.5 x 13.5,
Oil on canvas



31. Yellow Magic
SS 13.5 x 14.5",
FS 23" x 22",
Oil on canvas

CATALOGUE



32. The Wall
SS5" x 19", FS 23" x 27", Oil on canvas



33. Riverside
SS15.5" x 19.5", FS 19.5" x 23.5"
Oil on canvas



34. Abstract flowers
SS 10.5" x 9.5", FS 14" x 13"
Oil on canvas

CATALOGUE



35. Abstract floral (square)
SS 8" x 8", FS 13" x 13"
Oil on canvas



36. La Guitarista
SS 10.5" x 13.5", FS 16" x 19"
Oil on board



38. June Sunset over the
Potomac
Paper size 22.5" x 28.5.
Image size 17.5" x 23.5".
Limited edition print.
Offset lithograph.
Signed in pencil.



37. Autobiography of an artist
SS 33.5" x 45.5", FS 36" x 48"
Oil on canvas, unsigned

CYNTHIA A. DAWLEY BIOGRAPHY



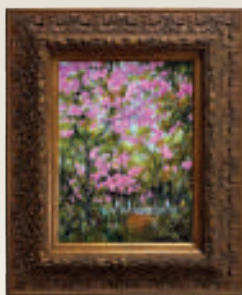
Cynthia A. Dawley (1964 -) and her sister Catherine, have personally supported and enabled this exhibition. Cynthia is also an artist in her own right and grew up watching and helping her father paint. She has been surrounded by the art world her entire life and her works have been used on corporate levels by such entities as Cartier, Colavita, and on the HBO series *The Sopranos*. A member of Oil Painters of America, the American Impressionist Society, and American Women Artists, Cynthia strives to continue creating, working solely in oils. Cynthia has exhibited her works in galleries nationally and is included in numerous private and public collections. She lives and paints in Cranford, NJ. For more information, visit www.CADawley.com



42. One Spring Morning,
oil on canvas



43. As the Sun Settles In,
oil on canvas



44. Central Park Blossoms,
oil on canvas



45. Between the Trees,
oil on canvas

PRICE LIST

Exhibit No.	Title	Date	Size	Medium	Price	Sold
REALISTIC						
1	Artist and Model	1969	SS 33" x 42" FS 40" x 50"	Oil on board	\$78,000	
2	Cowboy Cavalier	1969	SS 30.5" x 35" FS 36" x 32"	Oil on canvas	\$96,000	
3	American King	1969	SS 33" x 28" FS 41" x 37"	Oil on canvas	\$175,000	
4	Indian Girl (Anadarko Maiden)	1972	SS 14.75" x 14.25" FS 21.75" x 21.25"	Oil on board, signed lower right	\$7,500	
5	Portrait of a Wichita Chief	1975	SS 18" x 18.5" FS 26.25" x 26.5"	Oil on board, signed lower right	\$15,000	
6	Lady in Black	1975	SS 31" x 23.5" FS 36" x 29"	Oil on board, signed upper left	\$35,000	
7	Portrait of Job (in oval)	1975	SS 37" x 32.5" FS 53" x 50"	Oil on canvas	\$72,000	
IMPRESSIONIST						
8	Cartier in Winter	1984	SS 23" x 35" FS 32" x 44"	Oil on canvas	\$87,500	
9	Geometric sail boats	1985	SS 7" x 10.5" 10.5" x 14"	Watercolor on paper	\$6,000	
10	The Art Collector	1985	SS 23" x 29" FS 34" x 40"	Oil on canvas	\$20,000	
11	Carnegie - Mellon in the Rain, August 1987	1987	SS 13" x 9.5" FS 21" x 17.25	Oil on board	NFS	
12	Card Shark	1987	SS 19" x 30" FS 20.5" x 31.5	Oil on board	\$7,500	
13	"Rue De Pontenelle" (Académie Française as seen from The Louvre)	1987	SS 49" x 69" FS 58" x 77"	Oil on canvas	\$96,000	
14	View of the Capital from New Jersey Ave or State Street, Madison, WI.	1988	SS 16.5" x 26" FS 24" x 34"	Oil on board	\$19,600	
15	Road to the Lake, Lake Charles, LA	1988	SS 29" x 30" FS 35.5" x 37"	Oil on canvas	\$32,000	
16	Wichita Prince (an imagining of what the Chief he painted in 1969 would have looked like when he was a young man)	1988	SS 49" x 39.5" FS 56" x 46"	Oil on board	\$96,000	
17	Luncheon at Patricia Murphy's, NYC	1988	SS 39" x 47" FS 46" x 53.5"	Oil on canvas	\$48,000	
18	Montmartre	1988	24" x 36"	Oil on canvas	\$45,000	S

PRICE LIST

Exhibit No.	Title	Date	Size	Medium	Price	Sold
19	Florida Fishing Docks	1989	SS 29" x 39" FS 38" x 48"	Oil on canvas	\$44,000	
20	Walt Witman	1989	SS 39" x 29.5" FS 48" x 38"	Oil on canvas	\$60,000	
21	Preparing for the Ballet	1989	SS 39.5" x 56" FS 46" x 62"	Oil on canvas	\$66,000	
22	Arlington Memorial Bridge Steps	1992	SS 19" x 30" FS 27" x 37"	Oil on canvas	\$32,000	
23	On the Trail	1992	SS 12" x 19" FS 21" x 28"	Oil on canvas, signed lower right	\$15,000	
24	The Card Player	1992	SS 5.5" x 7.5" FS 10" x 12"	Oil on board	NFS	
25	Champaign Ladies	1992	18" x 18"	Oil on canvas	\$30,000	S
26	Doing Lunch (white garden furniture)	1993	SS 22" x 17" FS 23" x 28"	Oil on canvas	\$24,000	
27	The Reception (Shoreham Hotel)	1993	SS 27.5" x 29.5" FS 35" x 37"	Oil on canvas	\$32,000	
28	The Artist's Secret Garden	1993	48" x 72"	Oil on canvas	\$104,000	S
29	The White House	1994	SS 23" x 35.5" FS 34" x 46"	Oil on canvas	\$25,000	
30	China Town	1995	SS 7.5" x 9.5" FS 15.5 x 13.5	Oil on canvas	\$3,000	
31	Yellow Magic	1996	SS 13.5 x 14.5" FS 23" x 22"	Oil on board	\$18,000	
32	The Wall	1997	SS 5" x 19" FS 23" x 27"	Oil on canvas	\$20,000	
THE LAST SERIES						
33	Riverside (yellow hat)	2006	SS 15.5" x 19.5" FS 19.5" x 23.5"	Oil on canvas	\$18,000	
34	Abstract Flowers	2006	SS 10.5" x 9.5" FS 14" x 13"	Oil on canvas	\$6,000	
35	Abstracted Floral	2006	SS 8" x 8" FS 13" x 13"	Oil on canvas	\$6,000	
36.	La Guitarista	2006	SS 10.5" x 13.5" FS 16" x 19"	Oil on board	\$9,500	
37	Autobiography of an Artist	1968 - 2008	SS 33.5" x 45.5" FS 36" x 48"	Oil on canvas, unsigned	\$75,000	

PRICE LIST

Exhibit No.	Title	Date	Size	Medium	Price	Sold
PRINTS						
38	June Sunset over the Potomac (View from Kennedy Center).	1992	Paper size 22.5" x 28.5. Image size 17.5" x 23.5".	Limited edition print. Offset lithograph. Signed in pencil.	\$1000	15 copies (4 Artist proof, 11 numbered editions)
39	National Cathedral, Washington DC	1987	Paper size 23" x 29" Image size 18.5" x 23.25"	Limited edition print. Signed and numbered in pencil. Offset lithograph.	\$800	1 copy
40	Cafe de la Paix NYC	1985	Paper size 23.5" x 33". Image size 18.5" x 28.75".	Limited edition print. Signed and numbered in pencil. Offset lithograph.	\$900	3 copies
41	Garden	1986	Paper size 23" x 29" Image size 18.5" x 23.25"	Limited edition print. Offset lithograph. Signed and numbered in pencil.	\$800	1 copy
WORKS BY CYNTHIA DAWLEY						
42	One Spring Morning by Cynthia A. Dawley	2020	SS 17.5" x 17.5", FS 23" x 23"	Oil on canvas, signed lower right.	\$3,500	
43	As the Sun Settles In by Cynthia A. Dawley	2023	SS 9.5" x 7.5", FS 18" x 16"	Oil on canvas, signed lower right	\$1,800	
44	Central Park Blossoms by Cynthia A. Dawley	2024	SS 11.5" x 8.5", FS 18.5" x 15.5"	Oil on canvas, signed lower right	\$2,100	
45	Between the Trees by Cynthia A. Dawley	2025	SS 13.5" x 10.5", FS 19.5" x 16.5"	Oil on canvas, signed lower right	\$2,400	

Please note: SS is sight size and FS is frame size

L'ENFANT
GALLERY

ESTD. 1973

www.lenfantgallery.com

 @lenfantgallery